



## GAC 66 FLAT TOP BARGE

### GENERAL:

Built	P.T.Jaya Shipyard Batam, Indonesia, 2001
Flag	Panama
Class	B.V.

### MAIN DIMENSIONS:

Length Overall	76.20 m
Beam Moulded	24.40 m
Depth Moulded	4.88 m
Draft: Designed loaded	3.70 m
Draft: Light	0.80 m

### TONNAGE:

GRT	2633 tons
NRT	789 tons
DWT	6,000 tons
Deck Capacity	15 tons / m <sup>2</sup>

### PLATING SCANTLINGS:

Deck	16 mm
Bottom	12 mm
Side	12 mm
Bulkhead	10 mm

### NO. OF BULKHEADS:

Longitudinal	2
Transverse	7

### NO. OF STANCHIONS:

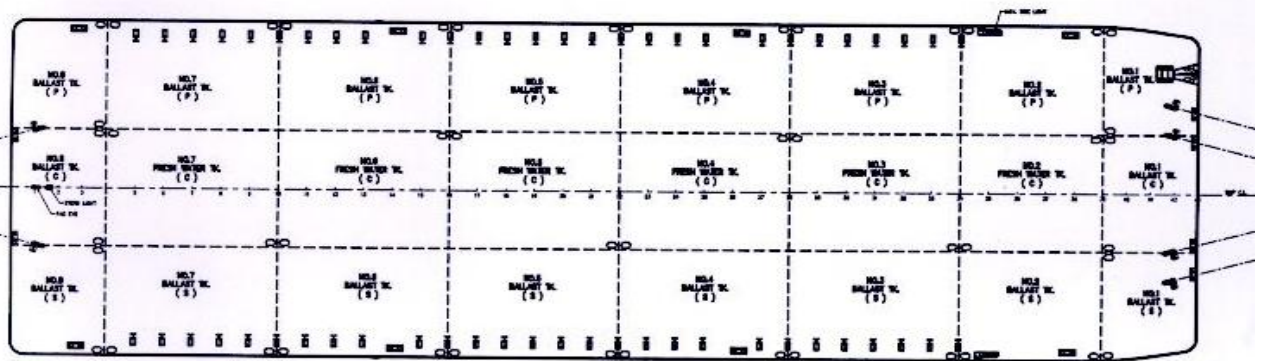
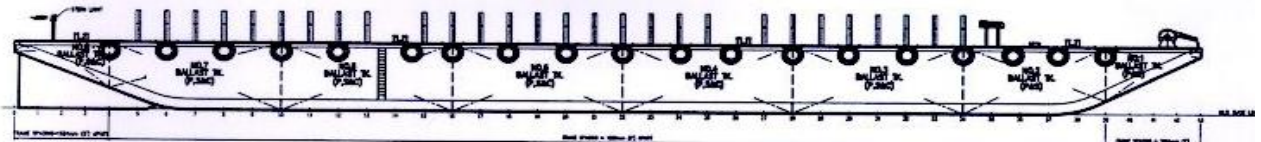
19 on each side
-----------------

### NO. OF MOORING BOLLARDS:

8 Double mooring bits
-----------------------

### TOWING BITS:

2 Smit towing bits at forward end
-----------------------------------



### PRINCIPAL DIMENSIONS

LENGTH OVERALL	76.200M (250'-0")
BREADTH MOULDED	24.384M (80'-0")
DEPTH MOULDED	4.877M (16'-0")
DECK LOADING	15 TONNES / M <sup>2</sup>

<b>Java</b>	PT. JAYA ASIA SHIPYARD
KIM CHUAN MARINE PTE. LTD.	
200' x 80' x 16'	
DECK CARGO/TANK RANGE	
GENERAL ARRANGEMENT	